

NPA

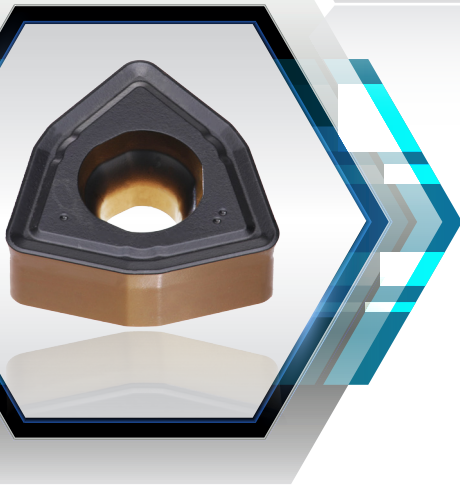
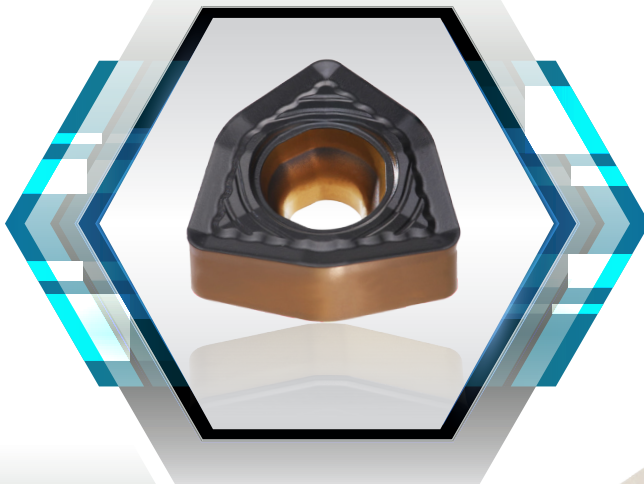
New Product Announcement No. 2019-26



TURN SFEED

HIGH FEED TURNING

High-Feed Turning Positive Inserts
and Holders for Left or
Right Bi-directional Turning



KEY POINT

**TaeguTec has released a new high-feed turning positive inserts and holders
 TURN-SFEED capable of both left and right bi-directional turning.**

To improve productivity, TaeguTec has released a high feed turning insert line demonstrating good chip control with holders which can machine both left and right directional turning applications without having to change the tool holder.

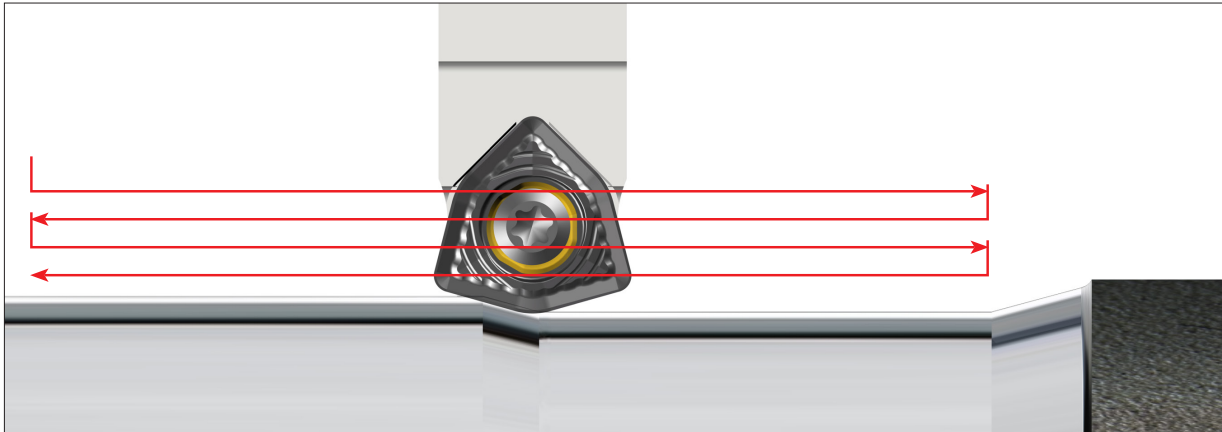
The TURN-SFEED line enables both left and right directional turning using one neutral type of holder, and the positive-type insert is designed with anti-rotating grooves on the bottom side as well as strong screw clamping for more robust clamping that generates good performance during high-feed turning.

Features

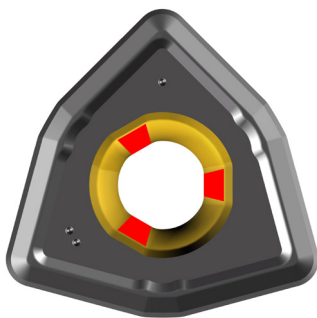
- Productive high-feed turning with a maximum 3 mm/rev feed and maximum 2 mm depth of cut
- Positive type insert with 6 cutting edges (3 index) and optimized chip breaker
 - Left or right bi-directional continuous turning with one neutral type of holder
 - Reduced cycle time and inventory of holders
 - Good chip control and low cutting force
- Anti-rotating groove design and special screw clamping for more stable machining
- Internal coolant supply from upper and lower sides for good chip control and tool life
- TT8115, TT8125, TT8135 are bi-colored CVD coated grades for improved machining performance



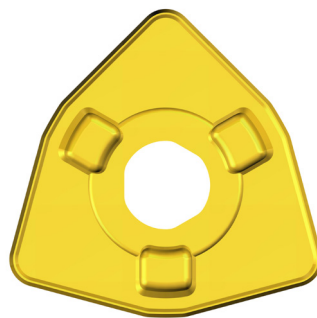
Capable of left and right bi-directional continuous turning



Screw hole and grooves for anti-rotating

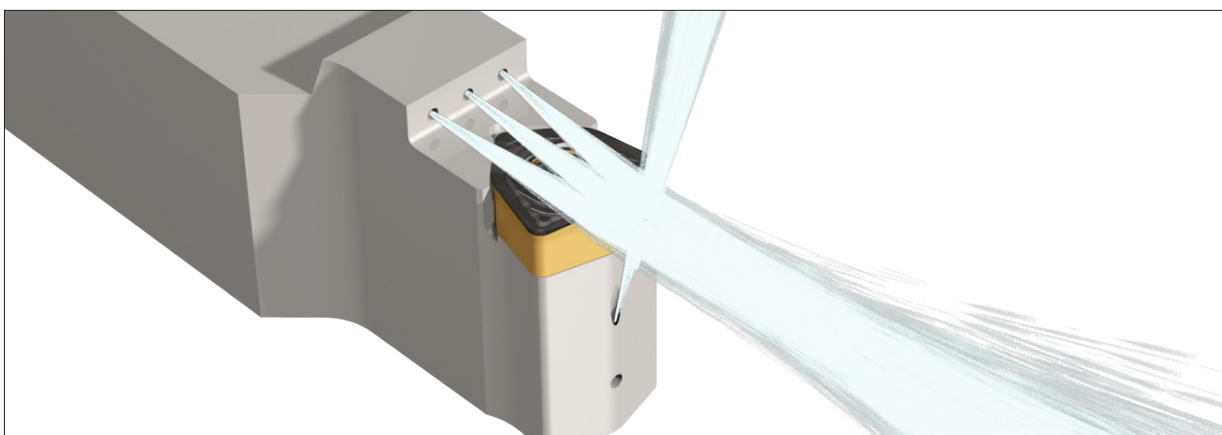


Special screw hole

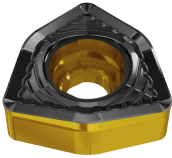
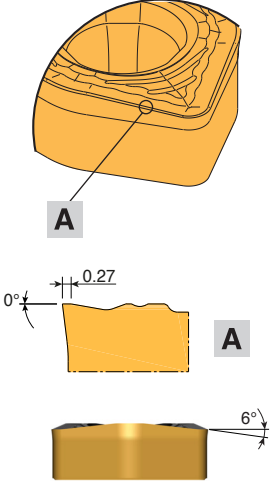
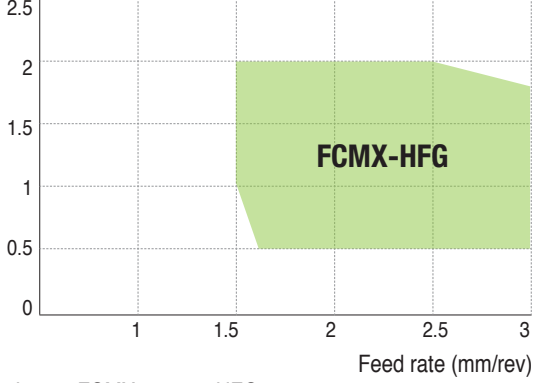
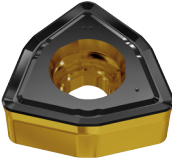
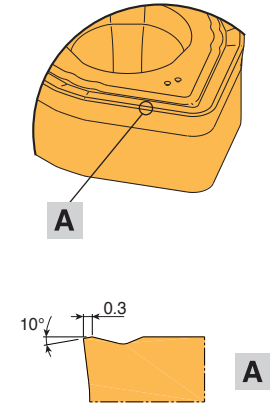
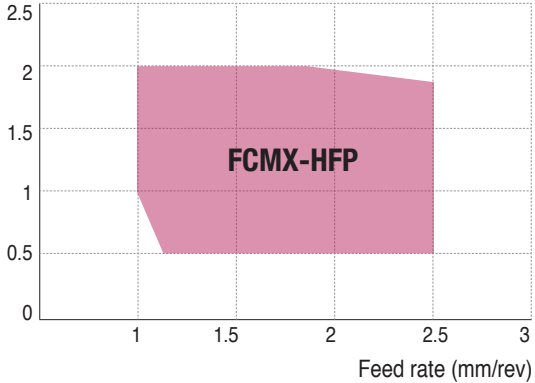


3 grooves on bottom side

Upper and lower coolant supply



FCMX chip breaker geometry and chip control range

| Chipbreaker | Cutting edge geometry | Graph |
|--|---|---|
|  <p>HFG</p> <ul style="list-style-type: none"> • High feed turning for general purpose in steel and stainless steel • Low cutting force with special inclination (6°) design • Heat radiator design for effective cooling |  <p>A</p> <p>0°</p> <p>0.27</p> <p>6°</p> | <p>Depth of cut (mm)</p>  <p>FCMX-HFG</p> <p>Feed rate (mm/rev)</p> <ul style="list-style-type: none"> • Insert: FCMX 100616-HFG • Cutting speed (V): 150 m/min • Material: AISI 1045 (HB200-230) |
|  <p>HFP</p> <ul style="list-style-type: none"> • High feed turning for steel, especially in alloy steel • Strong cutting edge |  <p>A</p> <p>10°</p> <p>0.3</p> | <p>Depth of cut (mm)</p>  <p>FCMX-HFP</p> <p>Feed rate (mm/rev)</p> <ul style="list-style-type: none"> • Insert: FCMX 100616-HFP • Cutting speed (V): 150 m/min • Material: AISI 1045 (HB200-230) |

Availability

In stock

Price

Available in the GAL system

Sincerely,
TaeguTec



Bae Dae-wi
Non-Rotating General PM

KIT COLLECTIONS

These kit products are available in the format listed below.



| Cat. No. | Designation | Bill of materials | Qty. |
|----------|---------------------------------|------------------------|------|
| 6334754 | KISFT-SFXCN 32-FC1006 HF | SFXCN 3232 P1006 | 1 |
| | | FCMX 100616-HFG TT8125 | 3 |
| | | FCMX 100616-HFP TT8125 | 3 |



| Cat. No. | Designation | Bill of materials | Qty. |
|----------|---------------------------------|------------------------|------|
| 6334767 | KISFS-SFXCN 32-FC1006 HF | SFXCN 3232 P1006 | 1 |
| | | FCMX 100616-HFG TT8125 | 20 |



| Cat. No. | Designation | Bill of materials | Qty. |
|----------|----------------------------------|------------------------|------|
| 6338409 | KISFF-A-FC1006 HFG TT8125 | FCMX 100616-HFG TT8125 | 100 |
| 6338410 | KISFF-B-FC1006 HFG TT8125 | | 300 |
| 6338411 | KISFF-A-FC1006 HFP TT8125 | FCMX 100616-HFP TT8125 | 100 |
| 6338412 | KISFF-B-FC1006 HFP TT8125 | | 300 |